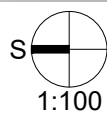
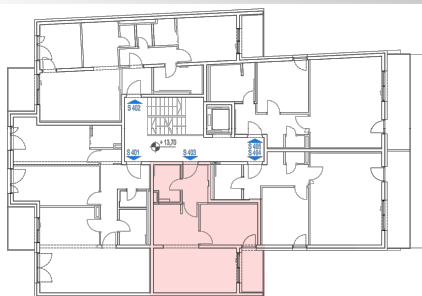
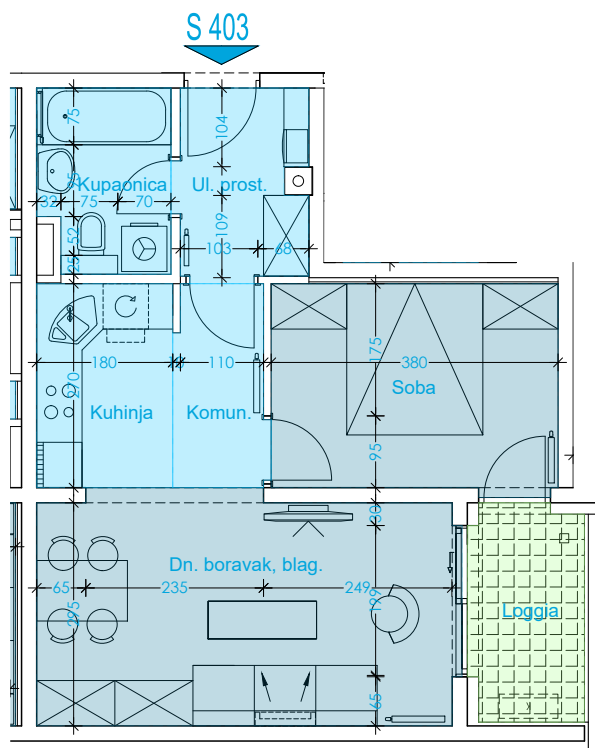
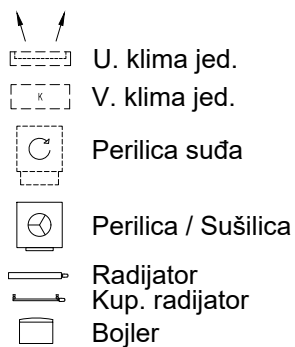


STAN : S403

Etaža : 4. Kat
 Površina : 47,03 m²
 Broj soba : 2
 Orientacija : J-Z



Iskaz Netto Površina - Stan 403

Naziv	G. Pod	Osn.pov.	Koef.	Površina
Ul. prost.	ker.pl.	4.276m ²		4.28 m ²
Kupaonica	ker.pl.	4.127m ²		4.13 m ²
Kuhinja	ker.pl.	4.856m ²		4.86 m ²
Soba	parket	10.360m ²		10.36 m ²
Dn. boravak, blag.	parket	16.941m ²		16.94 m ²
Komun.	parket	3.252m ²		3.25 m ²
Loggia	gress	4.290m ²	0.75	3.22 m ²
		48.101m ²		47.03 m ²