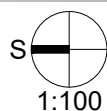
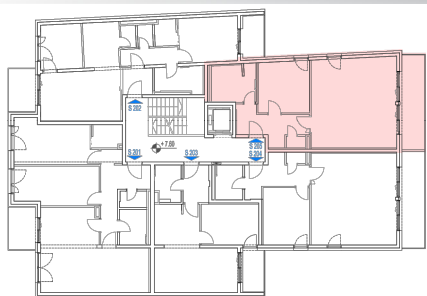
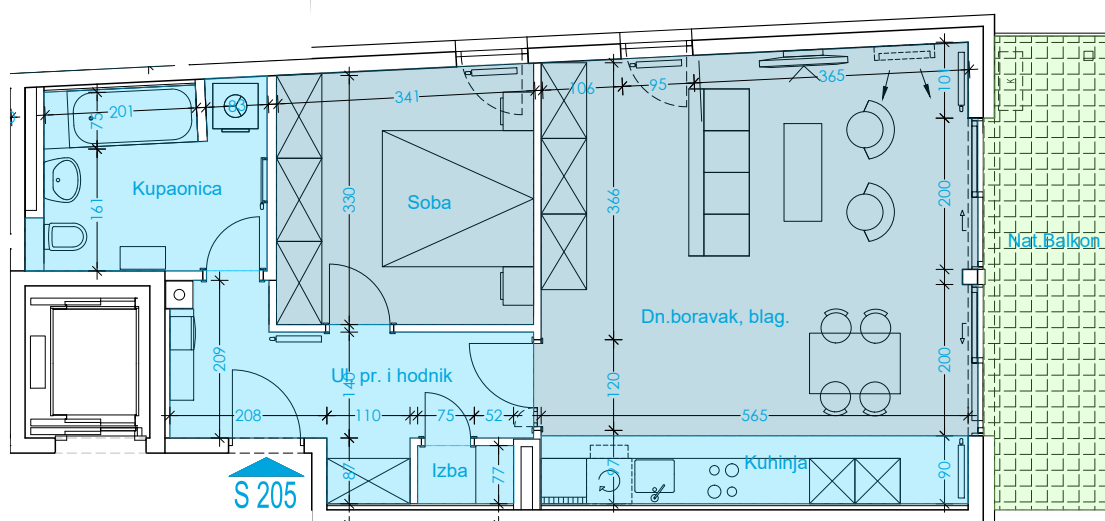


STAN : S205

Etaža : 2. Kat
 Površina : 67,81 m²
 Broj soba : 2
 Orientacija : J-I



- U. klima jed.
- V. klima jed.
- Perilica suđa
- Perilica / Sušilica
- Radijator
- Kup. radijator
- Bojler

Iskaz Netto Površina - Stan 205

Naziv	G. Pod	Osn.pov.	Koef.	Površina
Dn.boravak, blag.	parket	29.236m2		29.24 m2
Kupaonica	ker.pl.	7.314m2		7.31 m2
Soba	parket	11.473m2		11.47 m2
Izba	ker.pl.	0.978m2		0.98 m2
Ul. pr. i hodnik	ker.pl.	8.701m2		8.70 m2
Kuhinja	ker.pl.	5.082m2		5.08 m2
Nat.Balkon	gress	10.041m2	0.50	5.02 m2
		72.825m2		67.81 m2