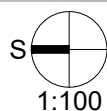
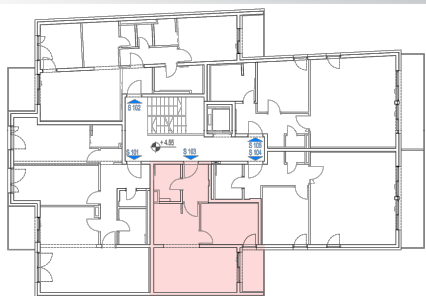
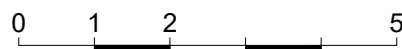
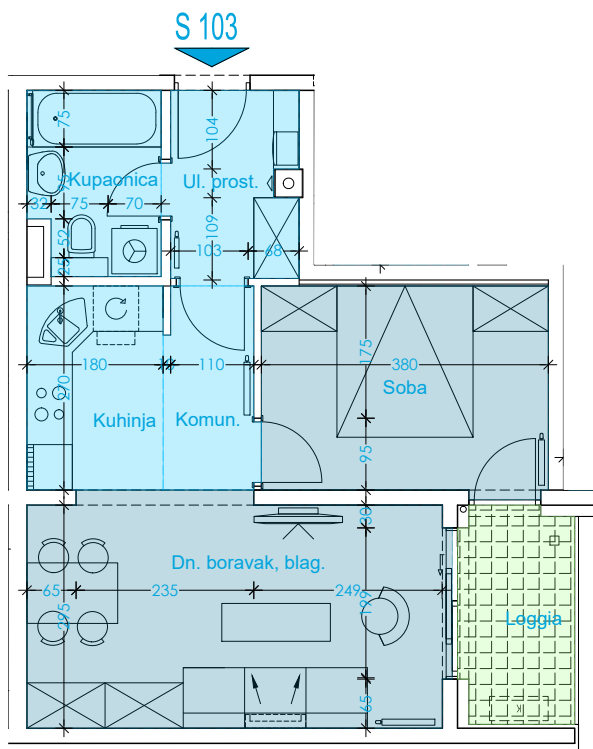
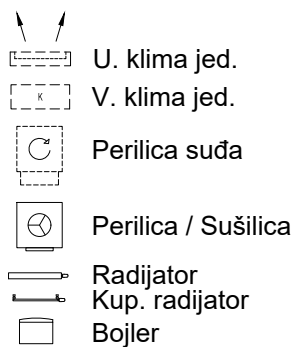


STAN : S103

Etaža : 1. Kat
 Površina : 47,03 m²
 Broj soba : 2
 Orientacija : J-Z



Iskaz Netto Površina - Stan 103

Naziv	G. Pod	Osn.pov.	Koef.	Površina
Ul. prost.	ker.pl.	4.278m2		4.28 m2
Kupaonica	ker.pl.	4.127m2		4.13 m2
Kuhinja	ker.pl.	4.856m2		4.86 m2
Komun.	ker.pl.	3.252m2		3.25 m2
Soba	parket	10.360m2		10.36 m2
Dn. boravak, blag.	parket	16.941m2		16.94 m2
Loggia	gress	4.290m2	0.75	3.22 m2
		48.104m2		47.03 m2